



# **Blower Assembly and Owner's Manual**



**WARNING!** Read this manual before operating your Cheetah blower.



# IMPORTANT INFORMATION

Congratulations on your purchase of a top quality Cheetah Blower.

This instruction manual will aid in the assembly, operation and maintenance of your new Blower. Please read carefully to ensure safety and the long life of your product.



**WARNING** Read all safety warnings and all instructions before use! Failure to follow the warnings and instructions may result in fire and/or serious injury. Save all warnings and instructions for future reference.

Do not operate the unit before reading this manual!

Keep this instruction manual in a safe place for future reference or if service is required on your unit.

## General safety regulations



Warning!



Be careful of objects being thrown out!



Read the directions for use before operating the machine.



Read the manual before carrying out any maintenance work.



Wear safety goggles, a helmet and ear protection.



Wear sturdy, enclosed safety boots.



Wear safety gloves.



Protect the machine from rain and damp. Do not use in rain.



Warning! Rotating parts!  
Be sure impeller cover is fitted secure.



Bystanders must be at least 15 metres away from operating unit.

- Read the instructions carefully. Ensure you are familiar with all controls and learn how to operate the machine properly.
- Stay alert and watch what you are doing when operating a power tool. Do not operate the blower under the influence of alcohol, drugs or medication or when you are tired or sick.
- Operate the blower at reasonable hours only - not early in the morning or late at night when people might be disturbed. Check with your local council for operation times.
- Do not operate the blower indoors or in confined spaces.
- While the blower is running, always keep hands and feet away from blower tube. (Keep away from any bystanders or animals when in use.)
- Use only manufacturer's genuine recommended replacement parts and accessories.



## Table of Contents



### Quick Start

Quick Start Guide	1
-------------------	---



### Features & Definitions

Feature Definitions	2
---------------------	---



### Safety & Handling

Safety Instructions	3
Hazards	5
Personal Safety Equipment	5



### Assembly Procedures

Assembly	6
----------	---



### Operating Instructions

Fuelling Procedures	7
Starting Instructions	8
Stopping Instructions	8
Blowing Tips	9



### Maintenance & Care

Air Filter	10
Spark Plug	11
General Maintenance	11
Cleaning & Storage	12
Maintenance Chart	13



### Troubleshooting

Troubleshooting	14
-----------------	----

NOTE – WARRANTY DETAILS ARE NOT WRITTEN WITHIN THIS OPERATOR'S MANUAL. REFER TO OTHER DOCUMENTS SUPPLIED WITH THIS MACHINE FOR WARRANTY DETAILS.

THE WARRANTY DOCUMENTS MAY INCLUDE TECHNICAL SPECIFICATIONS THAT ARE SPECIFIC TO EACH MODEL THAT ARE NOT WRITTEN WITHIN THIS OPERATOR'S MANUAL.



# QUICK START

## Quick Start Guide



Check the position & operation of controls to ensure you are comfortable before you start using the machine.

Check all components are assembled as per assembly instructions on page 6.

**THE BLOWER WILL NOT START IF THE UPPER TUBE IS NOT ASSEMBLED AS PER THE ASSEMBLY INSTRUCTIONS SHOWN ON PAGE 6.**



Before every use, check the machine for the following:

- That there are no leaks in the fuel system
- That all screws are securely fastened
- Blower nozzles and impeller cover are secured in the correct position

## Quick Start Guide

### 1 – Get ready...

- Place the Blower on a hard, level surface.
- Press the PRIMER 7 times.

### 2 – Set

- Set the choke lever to "COLD" position.
- Switch on the blower to ON (I) position.

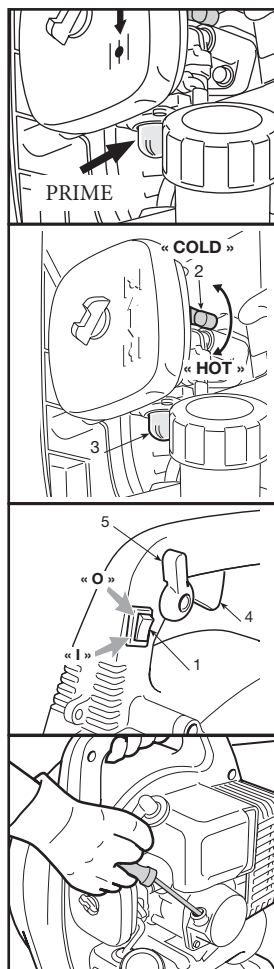
Note: Some Cheetah products switches by default is in ON position.

### 3 – Go!

- Pull the starter cord until you feel it resist.  
Then tug sharply on the starter cord 2 or 3 times.
- ✱ The engine may start or run for a short period set on cold. Choke can be set to hot while the engine is running.
- Now, set the choke lever to the "HOT" position.
- If required, tug sharply on the starter cord 2 or 3 times or until the engine starts
- ✱ ✱ In cold conditions, the engine may require 5-10 seconds running at idle. Pulling the trigger during warm-up may help starting.



CAUTION! ENSURE FEET, LEGS & HANDS ARE CLEAR OF THE IMPELLER COVER AND BLOWER TUBE/NOZZLE

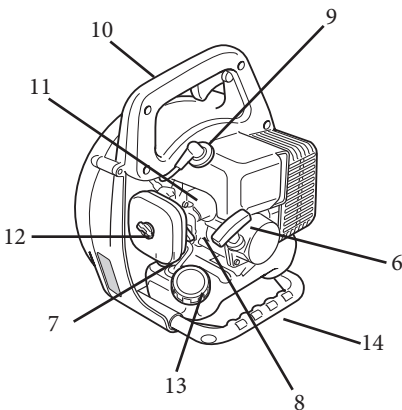
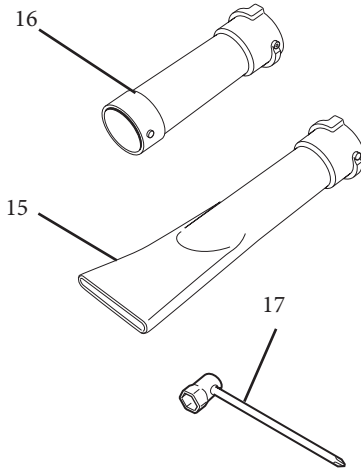
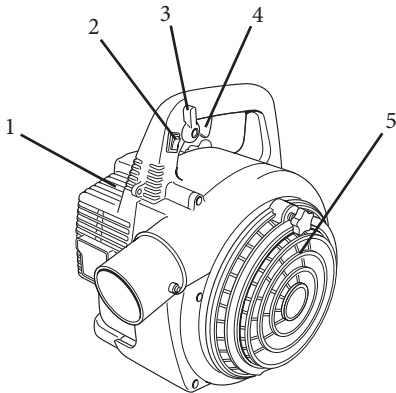




## Unit details

1. Engine
2. On/Off Switch
3. Cruise control
4. Throttle trigger
5. Intake grill
6. Starter handle
7. Primer
8. Choke
9. Spark plug

10. Handle
11. Idle speed adjustment screw
12. Air filter cover
13. Fuel tank
14. Foot
15. Lower flat tube
16. Upper blow tube
17. Tool





# SAFETY & HANDLING

## Safety Instructions

### Transporting the blower

- Proper handling of the blower will reduce the risk of personal injury.  
When transporting the blower make sure to always switch off the blower, remove any fuel and the blower tube.

### Before using the blower

- **The operation of any power tool can result in foreign objects being thrown into your eyes, which can result in severe eye damage. Before using the blower, always wear goggles or safety glasses with side shield and a full-face shield when needed. Always wear nonslip safety shoes, ear muffs and a dust mask when operating.**
- Do not start the blower until you have studied the instruction manual.
- Know the blower controls and learn how to stop operating the unit quickly in an emergency by pressing the **STOP** switch.
- Before using the blower ensure it is not worn or damaged.
- Ensure all screws and fasteners are tightened before use
- Discontinue use and switch off blower if operation is irregular. Have the blower inspected by authorised service technician before restarting.

### Operating the blower

- When using the blower, hold the handle firmly at all times. Discontinue use if discomfort occurs from vibration. Avoid long exposure without rest periods.
- Keep all body parts away from the blower nozzle end. Make sure the unit is OFF and spark plug is disconnected when clearing jammed material.
- Keep your work area clean and well lit.
- Do not operate power tools in explosive atmospheres, such as in the presence of flammable liquids, gases or dust. Power tools can create sparks which may ignite the dust or fumes.
- Keep children, bystanders and pets away when operating the power tool. Ensure there is a minimum distance of 15 metres.
- Dress properly. Do not wear loose clothing or jewellery. Keep your hair, clothing and gloves away from moving parts. Loose clothes, jewellery or long hair can be caught in the blower impeller & cause damage or injury.
- Operate only in daylight or good artificial light.
- Keep hands away from nozzle end and impeller cover when the blower is running.
- Walk with the blower. Never run.
- To maintain full control of the blower, keep a proper footing at all times with your weight evenly balanced over both feet and never over reach.
- Always keep the handle dry and free from oil and grease.



## Safety Instructions

- Always stop the blower and disconnect spark plug if the following conditions apply;
  - if a foreign object enters the blower tube or impeller and the blower begins to vibrate abnormally, STOP the operation and inspect for any damage or blockages.
  - before clearing any blockage.
  - before checking, cleaning or working on the unit.
  - whenever leaving the blower unattended.
  - if the unit becomes jammed.
  - if the unit becomes excessively hot.
- Do not use the blower if the switch does not turn it ON and OFF.
- Store blower out of the reach of children
- Blowers are not intended for use by children.
- Do not allow persons unfamiliar with these instructions to operate the blower.
- Always use blower with full blower nozzle extension so air stream can be close to the ground. Do not operate blower without nozzle attachment securely assembled (pg 6).

## Maintaining the blower

- Periodically check the blower for correct assembly, breakage of parts and any other condition that may affect the blower operation. If damaged, have the unit repaired before use.
- Store the blower in a well ventilated area, away from any naked flames such as those found in gas hot water heaters.
- Cheetah recommends that all maintenance, repair and inspection work be carried out by an authorised service centre.
- Check blower tube is correctly attached before and after each use.



# SAFETY & HANDLING

## Safety instructions

The following safety precautions must be strictly observed to avoid the risk of damage or personal injury.



Do not start or operate the unit inside a closed room or building. Breathing exhaust fumes can kill.



Be careful when operating the unit on slippery ground or overgrown terrain. Be attentive for concealed hazards, such as ditches, tree stumps and roots.



Maintain solid footing and balance while operating the unit. Operate only on ground level.



Do not operate on elevated structures such as ladders or roofs.



Do not cover blower tube end. Do not block modify or insert objects into blower end tube. When handling blower for assembly or maintenance tasks, always wear protective gloves.



Bystanders must be at least 15 metres away during operation of the unit as rocks and other materials may be thrown at high velocities. Switch the unit off immediately if approached.



Keep body away from hot muffler parts.



Stop the blower immediately if the blower starts to vibrate abnormally.



Do not blow above shoulder height. Always point to blower towards the ground.



Never aim/blow at people or animals and do not operate near open windows.



Do not insert object into impeller cover or use the blower to propel or fire projectiles.

## Hazards

NOTE : The following safety precautions must be strictly observed to avoid the risk of damage or personal injury.

- Check all fasteners regularly. Always ensure that the blower is in a safe operating condition.
- Never try to clear debris from the blower while the unit is in operation.

## Personal Safety Equipment

**Recommended safety equipment to wear when working with your blower.**



Ear muffs



Eye protection



Safety boots



Safety Gloves



Dust mask

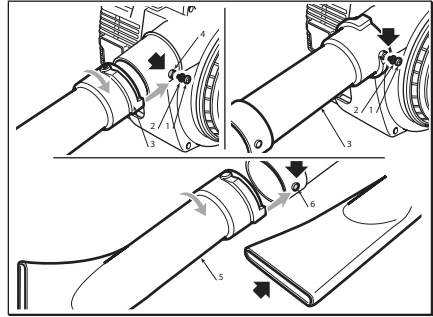




## Assembly

### Blower tube assembly.

- Align the keyway of the first upper tube (3) with the air outlet compartment, then push the tube until it is fitting firmly in place.
- Secure the tube to the blower using the screw (1) provided.
- Align the keyway of the lower blower tube (5) with the protrusion of the upper tube, push the tube in and rotate it 90 degrees clockwise to one of the two foreseen positions, until it is fitting firmly in place.
- Secure lower tube to upper tube.



NOTE: Fit the lower tube with a flat or round end depending on the type of work to be accomplished.

To remove the upper tube, insert the screwdriver included in the kit in the hole (5) and press firmly until you can slide the tube out from the air outlet nozzle.



THE MACHINE WILL NOT START IF THE UPPER TUBE IS NOT ASSEMBLED CORRECTLY AS PER THE ABOVE INSTRUCTIONS. TO ENSURE CORRECT ASSEMBLY, SCREW MUST BE FASTENED.



# OPERATING INSTRUCTIONS

## Before Starting Machine



Check the position & operation of controls to ensure you are comfortable before you start using the machine.

Check all components are assembled as per assembly instructions on page 6 before starting the machine.

### Check the machine for the following each time before use:

- That there are no leaks in the fuel system
- That all screws are securely fastened
- Blower air tube, blower nozzle and impeller cover are secured in the correct position

NOTE: Do not use the blower unless fully assembled. Both blower air tube and blower nozzle to be assembled.

## Fuel and Oil

### Recommended fuels

- Use only a mixture of normal unleaded petrol and 2-stroke engine oil. Mix the fuel mixture as indicated on the fuel mixing table.
- Start the machine at least 3m away from the refuelling site to avoid the possible risk of fire.
- Do not smoke whilst refuelling or working with the machine.
- Do not use the blower near inflammable liquids or gases. This could result in an explosion and/or fire.
- Pour the correct quantities of petrol and 2-stroke oil into a container. Then shake the container well.
- Add 450ml of fuel/oil mix into the fuel tank and secure cap.

NOTE: Product may need to be reprimed if it has run out of fuel.



- Cheetah recommends the use of Cheetah Formula V 2-stroke oil at 40:1 fuel to oil ratio only.
- The use of other oils and or ratios will affect the engine lubrication, which may cause engine damage and void engine manufacturer's warranty.
- Do not use a fuel mixture which has been kept for longer than 90 days, it may damage the unit.
- Only use containers designed and approved for the purpose to transport and store fuel.

## Fuel Mixture Table

Petrol (unleaded)	2-stroke oil
4 litre	100 ml (Only for Cheetah Formula V 2-stroke Oil)
Mixing procedure: 40 parts unleaded petrol to 1 part 2-stroke oil	
USE Clean fresh "Regular Unleaded Fuel" Fuel with up to 10% ethanol can be used	



## Starting Instructions-Cold Engine Start

### COLD STARTING

A "cold" start of the engine means starting it after at least 5 minutes from when it was switched off or after refuelling.

1. Set unit on a hard, level surface. Set switch to the "ON" positions («I») (Fig 1).
2. Set the choke lever to the "COLD" position (Fig 2).
2. Press the primer device button (3) 7 times to prime the carburettor.
3. Hold the machine firmly with one hand on the hand grip (Fig 3), in order not to lose control of the machine during starting.
4. Pull the starter rope slowly until you feel some resistance, then pull cord 3 times.

NOTE: The engine may start or run for a short period when set on cold.

IMPORTANT To avoid breaking the starter rope, do not pull the whole length of it or let it slide along the edge of the cable guide hole. Release the starter gradually, to avoid letting it fly back uncontrollably.

5. Switch the lever (2) to the «HOT» position.
6. Pull the starter grip again, and press the throttle trigger all the way (4) until the engine starts as normal.
7. When the engine has started, press and release the throttle trigger (4) to allow the engine to run idle.
8. Rev the engine a little using the throttle trigger to warm it up before using the machine.

NOTE: If the starter rope is pulled repeatedly with the choke on, it may flood the engine and make starting difficult. If you happen to flood the engine, repeat the hot start procedure a few times to eliminate any excess fuel.

Fig 1

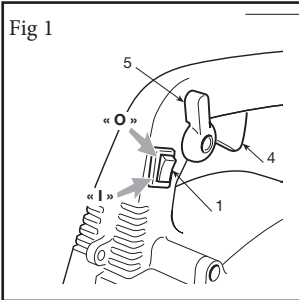


Fig 2

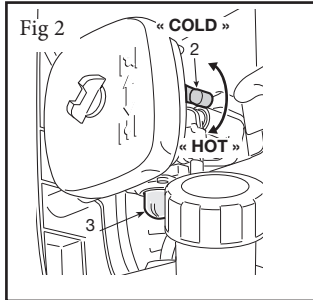
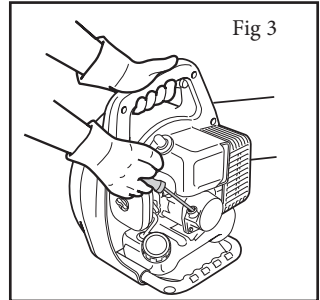


Fig 3





# OPERATING INSTRUCTIONS

## Starting Instructions-Hot Engine Start

To hot start the engine immediately after it has stopped, follow steps 2 - 3 - 4 - 6 of the cold start procedure, making sure the primer (3) is activated 2-3 times only.



If the engine does not start up after several attempts, read the section on trouble shooting.



Always pull the starter out in a straight line.  
IF THIS IS NOT FOLLOWED, STARTER CORD  
WILL BE FRAYED AND CORD WILL BREAK!

## Adjusting The Speed

Rotor rpm must be proportionate to the type of work and regulated by the throttle trigger (4) located on the upper handgrip. The throttle trigger can be held in any required position engaging the throttle setting device (5).

## Stopping The Engine

### To Stop the Engine:

- Turn the throttle setting device downwards (5).
- Release the throttle trigger (4).
- Press and hold the switch (1) in the ( O ) position until the engine switches of, then release the switch which will automatically move to the ( I ) position ready for the next start procedure.

## Blowing tips

### Blower

When using your blower always hold the unit with a minimum distance of 15cm between you and the blower at all times.

The blower tube should always face forward, always keep the blower tube in front and pointed away from yourself when in use.

Work in one direction. Using the blower in one direction will stop you from back tracking or blowing leaves into areas you have already cleared.



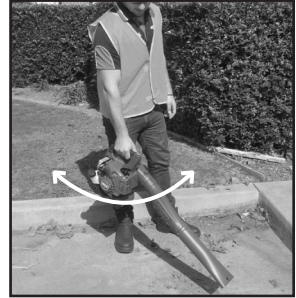


## Blowing tips Cont'd

### Blower sweeping technique

The sweeping method is achieved when the blower is swayed back and forth from left to right while the unit is held slightly in front.

- Use rake or broom to loosen debris before blowing.
- It is recommended to slightly dampen surfaces or use a mister attachment in dusty conditions.



## MAINTENANCE & CARE



### General maintenance

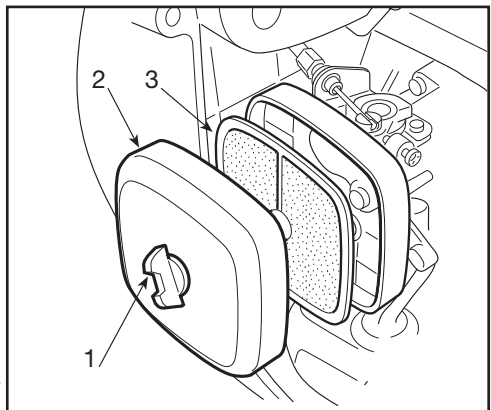
#### Maintenance of the air filter

Always switch off the machine and disconnect spark plug H.T. lead before carrying out any maintenance work.

**IMPORTANT** Cleaning the air filter is essential to guarantee the efficiency and duration of the machine. Do not work with a damaged filter or without a filter, as this could permanently damage the engine. It must be cleaned after every 8-10 working hours.

Clean the filter as follows:

- Loosen the knob (1), remove the cover (2) and the filter element (3).
- Wash the filter element (3) with soap and water. Do not use petrol or other solvents.
- Leave the filter to dry in the open air.
- Replace the filter element (3) and the cover (2) and tighten the knob (1).





# MAINTENANCE & CARE

## General maintenance



Never clean the air filter with petrol or inflammable solvents.



Make sure Air Filter is fitted correctly, (warranty will be void if engine is damaged due to incorrect fitment)



Do not run engine without a clean filter and cover fitted.

## Maintenance of the spark plug

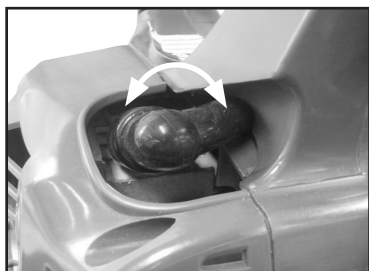
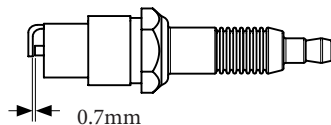
Bosch WSR6F, L8RTF

Torch L8RTC

NGK BPMR7A

Spark plug gap = (0.6 - 0.7 mm).

Tighten the spark plug with a torque of 15 - 22 Nm.



1.



2.

## Maintenance of the spark plug

Check the spark plug for carbon deposits after 10 hours of operation and if necessary clean. Thereafter service the spark plug after every 25 hours of operation.

1. Pull off the spark plug boot by twisting side to side gently.
2. Remove the spark plug with the supplied spark plug tube spanner.
3. Assemble in reverse order.

## Maintenance and Storage

Keep all nuts, bolts and screws tight to be sure the appliance is in safe working condition.

Check the blower frequently for wear or deterioration.

Replace worn or damaged parts.

Use only genuine replacement parts and accessories.

Store the appliance only in a dry place.



## General maintenance

### Maintenance Safety

- Stop the engine and disconnect the spark plug H.T. lead before clearing blockages, checking or working on the unit.
- Stop the engine, disconnect the spark plug H.T. lead and inspect the unit if it begins to vibrate abnormally.
- Use only genuine Cheetah replacement parts.

### Clearing an Inlet Blockage

Foreign material may cause a blockage in the inlet chute of your Blower. Ensure the impeller cover is not blocked or covered.

If necessary open impeller cover and clear blockage as required.

When clearing blockages;

- Switch your Blower off using the STOP switch
- Disconnect the spark plug H.T. lead.
- Wear safety gloves

## Cleaning & storage

- Carry out all the maintenance work.
- Drain the fuel out of the tank.
- When the fuel has been drained, start the engine.
- Allow the engine to run at idling speed until it stops. This will clean the remainder of the fuel out of the carburettor.
- Allow machine to cool before storing.
- Clean the exterior of the blower thoroughly using a soft brush and cloth.  
Note: Do not use water, solvents or polishes.
- Store the blower in a dry secure place out of reach of children.
- Do not place any other objects on top of the blower.
- Use only genuine replacement parts made and guaranteed by Cheetah.  
Insist on them from your parts and service dealer.



# TROUBLESHOOTING

## Maintenance Chart

Refer to the following table for routine maintenance.

Features	Requirements	Before use	After finish	Refuelling	Monthly	Yearly	If damaged	As required
Whole unit	Visual inspection (leaks)	•		•				
Throttle lever	Check operation	•						
Throttle trigger interlock	Check	•						
Stop switch	Check	•						
Fuel tank	Clean		•					
Blower housing/impeller cover	Check & clean		•					•
Air filter	Check				•			
	Clean				•			•
	Replace (Depending on conditions)						•	•
Cowling	Clean		•					
Cylinder fins	Clean							•
Spark plug	Clean & re-adjust gap					•		•
All accessible fasteners	Retighten	•						•
Muffler	Inspect	•		•				
	Inspect spark arresting screen					•		•
	Clean or replace						•	•



Always stop the engine before any maintenance is done on the unit. When all parts have stopped rotating, disconnect the spark plug lead to begin maintenance work.



Never attempt maintenance that is not outlined in this manual. All repair work must be carried out by a Authorised Service Centre.





## Troubleshooting

The following chart lists problem symptoms causes and corrective actions if your blower does not operate properly. If these do not identify and correct the problem contact your local Cheetah service centre.

Problem	Possible cause	Remedy
Engine will not start	Electrode is wet or fouled	Dry spark plug or replace
	Carbon deposit on electrode	Clean spark plug or replace
	Upper tube not connected properly	Check upper tube is connected and secured with screw.
Spark plug (no spark)	Cracked insulator	Replace spark plug
	STOP SWITCH in OFF position	Switch to ON
	Too small or large electrode gap	Adjust gap to 0.6 - 0.7mm
	Burned electrode	Replace spark plug
Ignition system (no spark)	Coil burned out, coil insulation failure	Contact Service Centre or replace
	Break in coil wire, transistor burned out	Contact Service Centre or replace
Engine won't start - Good compression, sufficient fuel (with spark)	Engine flooded	Discharge excess fuel by setting choke lever to hot and pull cord whilst depressing throttle trigger
	Excessively thick fuel	Contact Service Centre or replace fuel
	Use of incorrect fuel	Drain and replace with correct fuel
Poor compression, sufficient fuel (with spark)	Excessive wear on cylinder, piston, rings	Contact Service Centre
	Loose spark plug	Tighten spark plug
No fuel in carburettor (with spark)	No fuel in tank	Refuel
	Loose fuel line fitting	Contact Service Centre
	Clogged fuel line	Contact Service Centre
	Plugged air vent in fuel tank	Clean vent or replace
	Run out of fuel after use	Refuel and reprime as necessary
	Fuel filter blocked	Replace fuel filter
Insufficient power	Clogged air filter	Clean or replace
Blockages	Carbon build up in muffler	Contact Service Centre
	Fuel line/passage clogged	Contact Service Centre
	Piston seizure, diaphragm inoperative	Contact Service Centre
	Water in fuel	Contact Service Centre or change fuel
	Excessively lean fuel mixture	Contact Service Centre
Overheating		



# TROUBLESHOOTING

## More Details

Problem	Possible cause	Remedy
	Carbon deposits on piston	Contact Service Centre
Insufficient power (cont)	Improper fuel mixing ratio	Replace with correct 25:1 fuel mix
	Machine is overworked	Operate properly – do not overload
	Fan cover, cylinder fins, etc. dirty	Clean and remove dirt and debris
Engine makes knocking noise	Cylinder overheating	Clean fins
	Use of incorrect fuel	Replace with correct fuel
Poor acceleration	Fuel filter clogged	Contact Service Centre or replace
Fuel system clogged	Excessively low idle	Speed up idle/Contact Service Centre
	Excessively lean carburettor setting	Contact Service Centre
	Clogged air filter	Clean filter
Air leakage	Loose carburettor	Contact Service Centre
	Loose fuel pick up tube	Insert firmly/Contact Service Centre
Engine stops during operation	Stop switch is set to off position	Ensure stop switch is set to on
Engine stops abruptly	Shorting of spark plug	Clean spark plug or replace
	Piston scored, ignition failure	Contact Service Centre
Miscellaneous	Fuel tank empty	Refuel
	Carburettor or fuel tank clogged	Contact Service Centre
	Impeller clogged	Remove blockage
Engine is difficult to shut off	Overheated engine	Run at idle before switching off
Overheating or electrical fault	Overheated spark plug	Clean & adjust gap 0.6 - 0.7mm
	Defective stop switch	Contact Service Centre or replace
	Poor contact of ground wire	Contact Service Centre
Unit main body	Loose impeller	Contact Service Centre
Irregular vibration	Bent main shaft	Contact Service Centre
	Worn shaft bearings	Contact Service Centre
	Damaged impeller	Contact Service Centre
	Loose engine mounts	Retighten engine mount screws
Can not assemble blower air tube to main body	Screw still in main body	Refer to assembly procedures
	Debris on main body and/or blower air tube	Clean blower main body and blower air tube

If running difficulties continue, contact your closest Authorised Service Centre.

[illegible]

©2023 Briggs & Stratton Australia Pty Ltd

Cheetah is a trademark of Briggs & Stratton Australia Pty Ltd

All rights reserved. No part of this booklet may be reproduced by any means without prior written permission. All information herein is subject to change without notice.